



TOKYO
INTERNATIONAL
PROJECTION MAPPING
AWARD

Leakage is strictly prohibited
and handled with caution

Tokyo International Projection Mapping Award Vol.10 Production Manual 2025 ver.

※This file has been translated by AI Translator.



table of contents

- 1 - INTRODUCTION
- 2 - Themes & Awards
- 3 - Judging Criteria
- 4 - Location and scope
- 5 -access
- 6 -chart
- 7 - Schedule and delivery format
- 8 - About Dropbox and Contacts
- 9 - Precautions



1 - INTRODUCTION

What is the Tokyo International Projection Mapping Award?

Discovering and developing human resources who will be the core of the content industry in the future, and projection mapping

This is one of the largest projection mapping contests in Japan, launched with the aim of improving and disseminating spatial imaging technology.

What is Projection Mapping?

Projection mapping is one of the spatial imaging technologies that synchronizes real < real > with video < virtual >.

As the name suggests, "projection" in projection mapping means "projection", and "mapping" means

It has the meaning of "pasting the material of image on the surface layer of the projected object".

While using information such as design and unevenness of the object, by giving light and shading by video, the surface information of the object

Sometimes it's more three-dimensional, sometimes it's a completely different look, and what's supposed to be motionless is really

It is possible to express a realistic three-dimensional feeling and a sense of space as if it were moving.

The reason why projection mapping is gaining traction is that it is a fun and dreamy expression.

Being creative and always creating fresh expressions and excitement is not only about projection mapping.

It's also very important for creative awareness.

While referring to past domestic and international examples, we are searching for original ideas and expressions that are not bound by them.

We are looking forward to entertainment works that will create surprises, fun, and excitement that have never been seen before!



2 - Themes & Awards

theme

「Voyage」

Showtimes of the film

The work must be no longer than 1 minute and 30 seconds.

Awards

The following awards will be awarded to works that are recognized as excellent from among the submitted works.

Grand Prize (300,000 yen, certificate, trophy)

• Excellence Award (prize money 150,000 yen, certificate, trophy)

※ Planned



3 - Screening Criteria: Document Screening

Proposals submitted through the website will be reviewed according to the following criteria. The team that passes the document screening will move on to the production of the projection mapping video entry.

- Whether it is suitable as a work to be shown to an unspecified number of people at Tokyo Big Sight
 - Whether the team can guarantee sufficient quality
 - Whether the team can produce according to the production schedule without retiring in the middle
 - Whether the project makes use of CG anime technology and expressions and features unique to projection mapping
 - Whether the expression interprets the theme and makes use of it



3 - Judging Criteria: Final Screening

Based on the following judging items, the films to be screened will be selected from among the entries.

In November, we will present the best films at a screening at Tokyo Big Sight.

Prize money will be presented to the best films, and regular screenings of the films will be held at Tokyo Big Sight.

- Planning - Whether the work is in line with the theme and whether it is conveyed
- Ideas - Was there any surprise in the expression that made use of the characteristics of the projection surface as projection mapping?
- Technology - Whether you are making good use of 3DCG and anime technology
- Direction - Taking advantage of the fusion of music and video, it can be enjoyed by various people regardless of age or nationality as a public work.

Is the content entertaining?

- Production - Whether the submission deadline is met



4 - Location & Scope

The target of the video is the conference building at Tokyo Big Sight, and the area of the two inverted triangles that can be seen from the front.

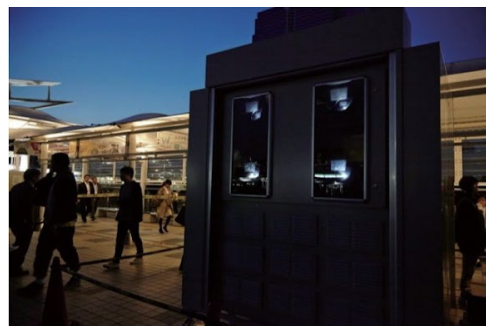
In addition, it will be projected using the current facilities of Tokyo Big Sight.

We will distribute a production chart, so please produce a video according to it, export it, and submit it. *See p9.

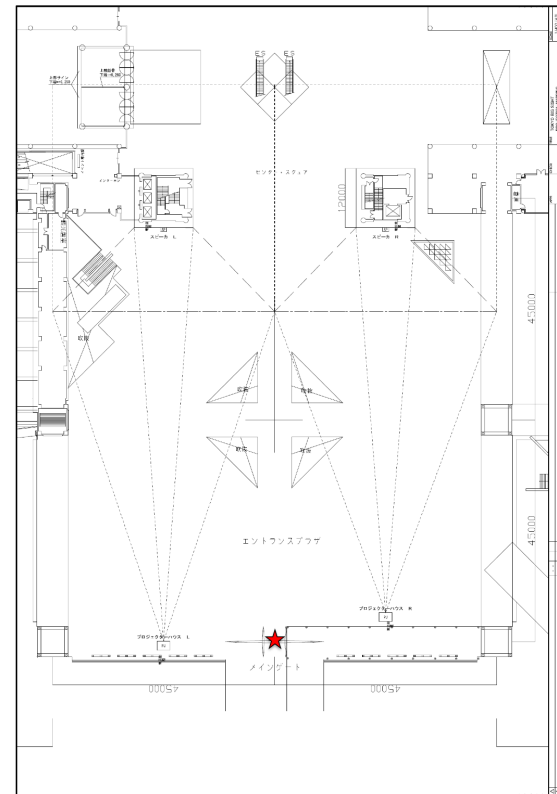
▼ Projection



▼ Projector House



The projector house has the following features:
A total of 8 Panasonic 20000lm projectors are installed, 4 on each side, and each projector is projected from above.



5 - Access

Screening venue: Tokyo Big Sight Access: <http://www.bigsight.jp/access/transportation/>

< Location >

〒135-0063

3-11-1 Ariake, Koto-ku, Tokyo

< Nearest Station >

• About 7 minutes on foot from International Exhibition Center Station on the Rinkai Line

• About 3 minutes on foot from Yurikamome "Tokyo Big Sight" Station

◎ Venue map



◎ Screening Venue



Past award-winning films are regularly screened at Tokyo Big Sight.
*For details, please check the official website of Tokyo Big Sight.



TOKYO
INTERNATIONAL
PROJECTION MAPPING
AWARD

6 - chart

The secretariat will distribute the following data to you for video production.

- Production charts (data formats: PSD, PNG)
- 3D data (data format: fbx)
- Tokyo Big Sight Conference Building Front Square Floor Plan

* Please check the automatic email after entry for the distribution link.

Please produce and export the video according to the "Production Chart".

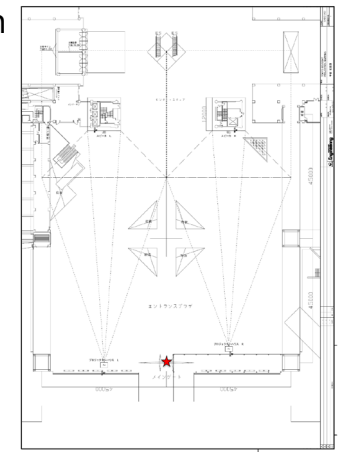
- The chart is created from the viewpoint (looking up) from the ☆ mark position of the floor plan.

Observe the size of the chart (3840x2160 / 16:9) and export in 30fps, mp4 with music.

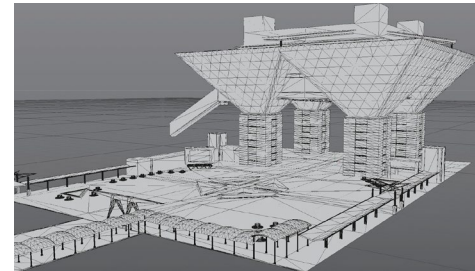
The scope of video production shall be the range of two inverted triangles. In the red frame below. Outside the red frame, please write it out in black.

•Reference data for the final exported video(<https://www.dropbox.com/scl/fi/uqn7vlueuzpybonf9jvpv/reference.mp4?rlkey=4icli8zu8zaijfq54gsof4tq&st=stjzkwj2&dl=0>) It is UP to.

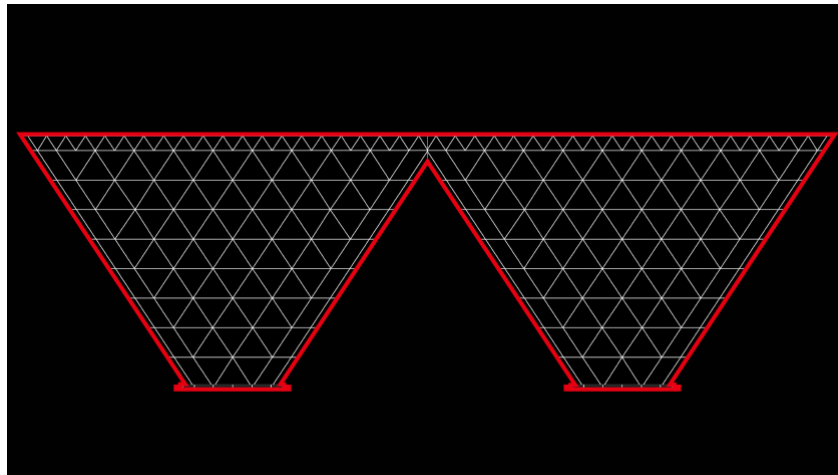
•Floor plan



•3D data



•Production Charts



•Export reference



TOKYO
INTERNATIONAL
PROJECTION MAPPING
AWARD

7 - Schedule and delivery form

Monday, June 30

Online entries now being accepted!

Tuesday, September 23, 14:00 Web entry deadline

We will inform you of the results of the document screening by email.

Tuesday, October 21, 14:00

Deadline for delivery of documents and work data

Please submit the final version of the completed data. Export and upload times are also Please consider this and submit it with plenty of time to spare.

☐ size... Full-size (3840×2160) ☐ frame rate... 30fps
☐ codec... MP4 ☐ with sound source ☐ list of materials used (The secretariat will provide you with the format)

Friday, October 31

Screening work announcement

The films to be screened at Tokyo Big Sight will be announced on the official website.

Late October to early November

Final data check of the films to be screened

Saturday, November 15

Screening and Announcement of Winning Works Held at Tokyo Big Sight!

~Data Naming Rules~

When submitting data, please refer to the following naming example and submit it with a file name.

If you want to upload the corrected data again, please number it so that you can see the new one after the date, such as v2 or v3.

Naming examples: "Team Name_Videoboard_Date.mp4", "Team Name_Completed Data_Date_v2.mp4"



TOKYO
INTERNATIONAL
PROJECTION MAPPING
AWARD

8 - About using Dropbox

Various materials and movie data related to production will be exchanged through the cloud-based file sharing service "Dropbox".

1. At the time of entry

Please upload your data from the link in the automatic reply email sent after registering the entry form [PMAVol.9 Application Document Submission Window].

2. After passing the document screening

The secretariat will issue a link for each team by the deadline for each progress check.

Please upload the data from the link.

* You can upload without registering an account.

There is no storage limit for uploads from the Dropbox desktop or mobile apps.

The maximum file size you can upload in the Dropbox web browser is 50GB.

■ Precautions ■

- Since it is a highly secure online storage, depending on the large amount of data or the network environment, the data transfer speed may take some time.

There is also.

- When submitting, please avoid uploading before the deadline as much as possible and submit with plenty of time.

- * When uploading heavy data such as video, please upload one file at a time.

- Depending on the network conditions, the upload may be completed incompletely. Please make sure that the upload is complete.

- Please note that if multiple people log in to one account at the same time, problems such as the screen may drop.

- Please note the following points when adding folder names and file names. If you do not follow the naming convention, you will not be able to upload it.

It may be the cause.

~File Name Naming Convention~

When submitting data, please refer to the following naming example and submit it with a file name.

If you want to upload the corrected data again, please number it so that you can see the new one after the date, such as v2 or v3.

Naming examples: "Team Name_Videoboard_Date.mp4", "Team Name_Completed Data_Date_v2.mp4"

[Unavailable special character list]
Backslash ¥ forward slash / double quotation mark "
colon: less than < greater than > pipeline | asterisk *
Question mark?



TOKYO
INTERNATIONAL
PROJECTION MAPPING
AWARD

8 - About using Dropbox

[At the time of entry]

Combine each submission into a single ZIP folder.
Change the folder to [〇〇〇(team name)_application documents_date.ZIP]
Change.

It will be sent to you after registering the entry form.
From the link in the automatic reply email [PMAVol.9 Application Document Submission Window]
Upload your data.

[After passing the document screening]

The secretariat will issue an upload link by the submission deadline.

Pay attention to the naming conventions for file names.
Please upload the data from the link.



8 -How to contact us

How to contact participants

Make sure you can receive emails from info@pma-office.jp.

For questions, please check this manual and the frequently asked questions (<https://pmaward.jp/faq/>) on the site
Please contact us.



9 - Other things to keep in mind

Precautions for production

- The screening time of the film must not exceed 1 minute and 30 seconds.
- Please be sure to export the delivered video in the specified codec and format with reference to P8.

Please note that if you deliver in a different condition, you may be asked to export it again or you may not be able to screen it.

- It is prohibited to use the sound source as background music without the consent of the author. Basic, original with clear copyright

Please use it from songs and free songs that have been copyrighted. The same applies when using sound effects, so that there is no problem with copyright

Permitted for use as long as it is accepted. Please note that the secretariat cannot bear the music royalty fee.

* For the use of original music, we may ask the copyright holder to seal the permission form issued by the secretariat.

- Expressions that infringe copyrights or portrait rights are prohibited.
- Use logos and text such as the title of the work, the name of the school, the name of the team, the name of an individual, the name of the company, and the name of the product or service in the video.

It is prohibited to do so.

- Expressions that make others uncomfortable, expressions that slander others, religious expressions, and messages of the same kind are prohibited.

I will. Sexually explicit and cruel and direct visual expressions are also prohibited.

- It is prohibited to use images from TV programs or commercial DVDs in the video without permission.
- It is prohibited to use paintings, illustrations, photographs, etc. created by others in videos without permission.
- It is prohibited to use product characters in videos without permission.



9 - Other precautions

Rights of the work

The rights to the video and music produced belong to the Tokyo International Projection Mapping Award Executive Committee, the organizer, and the right to use them is granted to partner companies such as Tokyo Big Sight Co., Ltd. In addition to projection mapping, it is also used for advertising of the above companies. (Websites, TV, digital signage, collections of works, company profiles, etc., are assumed, and there are no restrictions on still images, videos, etc.) However, we will allow you to use it as a production record for your job hunting or artist activities.

Artwork Information

During and after the production process, please ensure that information about the work (videos, still images, etc.) is not leaked to anyone other than those involved in the participating teams. Even after the end of the award, the completed data of the projection material includes information on the production chart, so please do not disclose it to the outside world. This does not apply when using it privately, such as when looking for a job. There is no problem in publishing photos of the production scene, such as meetings and work scenes, where the content of the work is not known, such as posting them on SNS or HP.

About Records

For the projection mapping video shown on the day of the screening, it is possible for each person to take their own video and still images. You can also post it on SNS. The award secretariat will also take recorded videos and stills, and the recorded videos will be uploaded to the official award YouTube at a later date, so you can use the video links for your own advertising and introduction of your production achievements.

From the Secretariat About the Offerings

It is prohibited to publish or use the proposal format, production manuals, production charts, and materials and materials provided by the secretariat for posting on SNS or for any other purpose.

Posting to SNS, etc.

For the sake of fairness, it is prohibited to post or leak production materials (videos and still images) in the middle stage before the screening. In connection with this award
Posts that slander the organizers, co-sponsors, partner companies, and other participating schools are prohibited. If the work is not directly understood, the production scenery, etc.
Feel free to post photos.

Terms of Participation

Please be sure to meet the deadlines for the production schedule, such as the submission date. After the data submission deadline, substitutions for personal reasons are not permitted. If you are unable to meet the deadline due to unforeseen circumstances, or if you are unable to continue participating, please report to the award office as soon as possible (in the case of students, please consult with the faculty member or school staff in charge first) and report to the award office as soon as possible.



9 - Other things to keep in mind

- Video production

We have held a workshop every year to check the points to note in production and the format at the time of export.

We will not be doing it this time, so please read this manual carefully before producing and exporting videos.

- This year's screening is scheduled to be open to the general public only.

We will set up a viewing area for the teams that entered,

As in previous years, we will not have a reception, event rehearsal, speaking or commenting at the screening, or award ceremony.

We hope that you will be able to watch the screening in the plaza in front of the conference in the same way as general visitors.

This year's screening is scheduled to be held only as a real event. There are currently no plans for online distribution.

If it is difficult for you to come or watch on the day, we apologize for the inconvenience, but please check the recorded video.

- Everyone who has entered will be responsible for transportation and accommodation to the site.

At the time of the annual screening, we provided assistance for transportation and accommodation for the entry team from afar.

We apologize for the inconvenience due to the change in the management policy this time, but we will bear your own burden. Thank you for your understanding.

- Judging/Commendation

Every year, at the time of the screening, multiple judges judged the film on-site, and the award team was decided.

This time, the judges will judge the awards in advance at the event, and the awards will be announced at the screening on the day of the event.

It will also be posted on the official website after the event.

At a later date, the secretariat will contact the team representative to send and award cash prizes, certificates, and trophies.



9 - Other things to keep in mind

frequently asked questions

Q. I would like to change my membership.

A. Please inform the secretariat of the change of members. If you wish to add a member, please submit the signed pledge to the secretariat again.

Q. I couldn't upload my data and didn't meet the submission deadline.

A. Depending on the large amount of data and the network environment, the data transfer speed may take some time.

When submitting, please avoid uploading close to the deadline as much as possible, and please render and submit with plenty of time.

Q. Can I take a documentary video at the screening?

A. For projection mapping videos screened on the day of the judging, you are not allowed to take your own videos and still images.

It's possible. You can also post it on social media.

Q. I don't know if the song I want to use is a free sound source.

A. For information on the copyright of music, please refer to the Japan Music Copyright Association (JASRAC) (<http://www.jasrac.or.jp/>).

Or contact the destination company or site.

Q. Is it possible to use live-action footage in the work?

A. Yes. There are no restrictions on the types of video technology.



9 - Other things to keep in mind

Frequently asked questions are also posted on the official website.

For other inquiries,

Please check this manual and the official website, and if you have any questions, please contact the secretariat.

*Inquiry address info@pma-office.jp

Official website: <https://pmaward.jp/>

Frequently Asked Questions: https://pmaward.jp/entry/entry_qa/

Detailed information about the awards is also updated on each social media site from time to time. Be sure to follow us!

 <https://www.facebook.com/pmaward.jp/>

 https://twitter.com/pmaward_jp

 <https://www.instagram.com/pmaward.jp/>

 <https://www.youtube.com/channel/UCkm4oV8cOMOMgNCgiLk7eSw>

 <https://note.com/pmaward/>

