



TOKYO
INTERNATIONAL
PROJECTION MAPPING
AWARD

Strictly prohibited to leak or
mishandle.

Tokyo International Projection Mapping Awards Vol.8 Production Manual 2023 Ver.

*This document has been created using an AI translation software.



Table of Contents

- 1 INTRODUCTION
- 2 Themes and Awards
- 3 Judging Criteria
- 4 Location and Scope
- 5 Access
- 6 Chart
- 7 Schedule and Delivery Format
- 8 Dropbox/ Contact Information
- 9 Notes / Cautions



1 - INTRODUCTION

What is the Tokyo International Projection Mapping Award?

It is the largest projection mapping contest in Japan, launched with the aim of discovering and nurturing the core talent that will drive the future content industry, as well as advancing and promoting the technology of projection mapping, which is a form of spatial image technology.

What is projection mapping?

Projection mapping is one of the spatial image technologies that synchronizes real objects with virtual images. The "projection" in projection mapping refers to the act of projecting images onto surfaces, and "mapping" means "sticking images to the surface of the projection target." By using information such as the design and unevenness of the target, it is possible to give the target surface a three-dimensional appearance with light and shadow created by images, sometimes revealing a completely different expression. It can even create a realistic sense of movement and spatial awareness for objects that do not actually move. Projection mapping is drawing attention for its ability to create enjoyable and dreamy expressions. It is important not only as a form of creative expression but also as a creative consciousness that generates constantly fresh and exciting experiences. We look forward to original ideas and expressions that do not necessarily follow past examples from around the world, and hope to see entertainment works that create surprises, fun, and emotions that we have never seen before!



1 - INTRODUCTION

Changes from Vol.7

- Expanded eligibility requirements

For Vol.7, the eligibility requirements were limited to "students enrolled in universities, graduate schools, technical colleges, vocational schools, or high schools". However, this time, we have expanded the eligibility requirements to "students or young video creators under the age of 30". By broadening the eligibility requirements, we hope to create opportunities for young video creators to create and showcase projection mapping projects who were previously unable to enter due to the student restriction or wanted to try again after graduating without winning an award.

- Increased the number of works shown on the event day

Previously, when we received submissions, the secretariat screened (planned) the documents and limited the number of teams entering the production to about 10-15. The reason for this was due to issues during the event day such as screening time, handling of the judging and awards, and the secretariat's workload leading up to the event (workshops, checking of submissions, answering questions, etc.). However, this time, we will screen the documents submitted during the entry process, but we will not limit the number of teams entering the production. By doing so, we hope to create more opportunities for many teams to create and showcase projection mapping projects.

However, please note that there may be limitations on the length of the works to be shown, and we will no longer be able to provide workshops, individual advice for production, and personalized support for submissions. Please understand these limitations in advance before entering the competition.



2 - Themes and Awards

Theme
"OPEN"

Screening time of the work
Please submit a work that is 1 minute and 30 seconds or less.

Awards
The following awards will be presented to outstanding works selected from the entries:

Grand Prize (JPY 300,000, certificate of merit, trophy)
Excellence Award (JPY 150,000, certificate of merit, trophy)
* subject to change



3 - Judging Criteria

We will evaluate the project proposals submitted through the website based on the following criteria. The teams that pass the screening will be nominated as the final candidates to create and present their projection mapping video at this event.

- Whether the proposed work is suitable to be presented to a large, unspecified audience at Tokyo Big Sight.
- Whether the team can ensure sufficient quality.
- Whether the team can complete the production according to the schedule without withdrawing from the project midway.
- Whether the proposal utilizes the techniques of CG animation and projection mapping to create unique expressions and features.
- Whether the proposal interprets and utilizes the theme in a creative and effective manner.



3 - Judging Criteria

Based on the following five criteria, the nominated works will be judged and excellent works will be selected by the judges. Cash prizes will be awarded to the excellent works and regular screenings at Tokyo Big Sight are scheduled after the end of the screening event.

***The judges will conduct a preliminary screening on site and announce the awards at the screening event.**

- Concept: Whether the work is in line with the theme and whether that is conveyed effectively.
- Idea: Whether the expression utilizes the features of the projection surface and if there are surprising elements.
- Technology: Whether the techniques of 3D CG and animation are utilized effectively.
- Direction: Whether the fusion of music and video creates an entertaining content that can be enjoyed by people of all ages and nationalities.
- Production: Whether the submission deadline was met punctually.



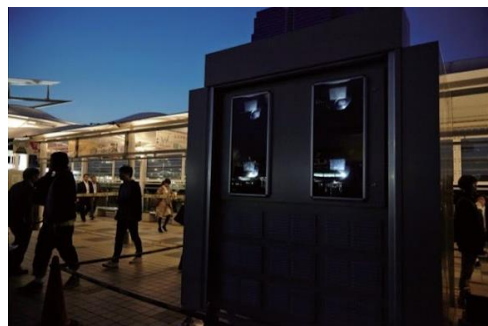
4 - Location and Scope

The target for displaying the video will be the area of two inverted triangular sections visible from the front of the conference building at Tokyo Big Sight. The projection will be done using the existing facilities at Tokyo Big Sight. A production chart will be distributed for use, so please produce and submit the video accordingly. (*Refer to P9)

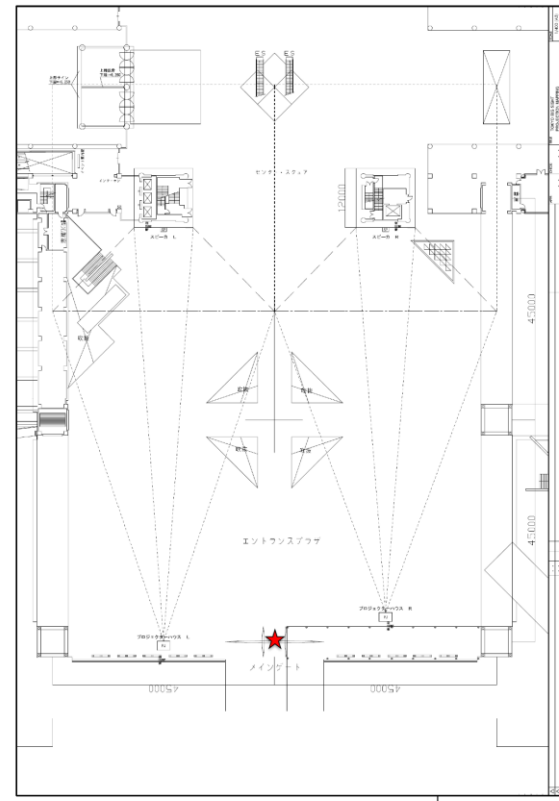
▼Projection setup during screening



▼Projector house



In the projector house, there are a total of eight Panasonic 20,000 lm projectors, with four projectors installed on each side, used to project the images.



5 - Access

Screening Venue: Tokyo Big Sight Access: : <http://www.bigsight.jp/access/transportation/>

<Address>

3-11-1 Ariake, Koto-ku,
Tokyo 135-0063, Japan

<Location>

3-11-1 Ariake, Koto-ku, Tokyo 135-0063, Japan

<Nearest Stations>

- About a 7-minute walk from Kokusai-tenjijo Seimon Station on the Rinkai Line
- About a 3-minute walk from Tokyo Big Sight Station on the Yurikamome Line

◎ Map of the venue



◎ Projection venue



We regularly screen past award-winning works at Tokyo Big Sight.
*Please check the Tokyo Big Sight official website for details.



TOKYO
INTERNATIONAL
PROJECTION MAPPING
AWARD

6 - Chart

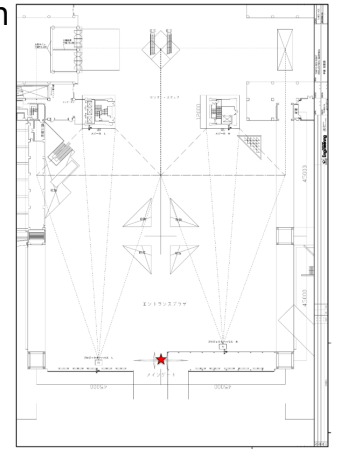
We will distribute the following data to everyone from the secretariat for the video production:

- Production chart (Data format: psd, png)
 - 3D data (Data format: fbx)
 - Tokyo Big Sight Conference Building Front Plaza Floor Plan
- *Please check the distribution link in the automatic email sent after entry.

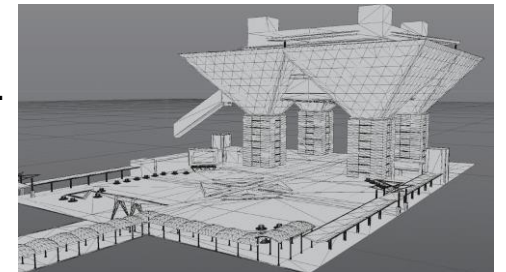
Please create and export the video according to the "Production Chart".

- The chart was created from the viewpoint (looking up) at the star mark on the floor plan.
- Please export the video with music, 30fps, mp4 format while maintaining the chart size (3840x2160 / 16:9).
- The video production range is limited to the two inverted triangles. Please draw the area outside the red frame in black.
- We have uploaded reference data for the final exported video(<https://picstokyo.box.com/v/vol8reference>).

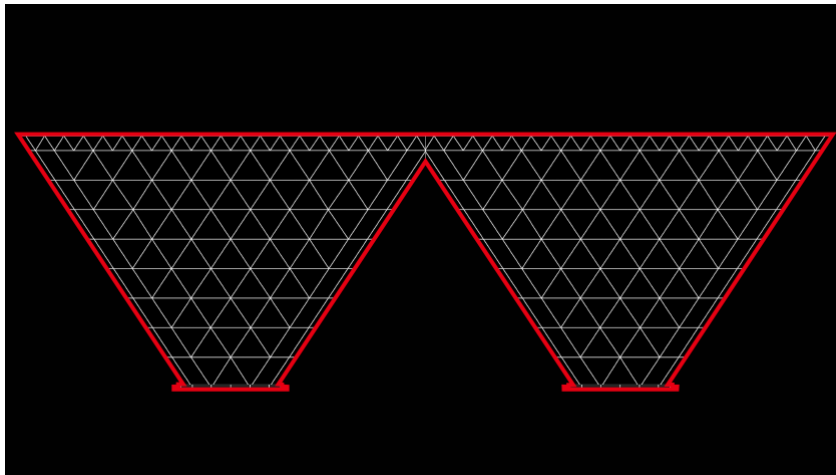
•Floor Plan



•3D data



•Production chart



•Export reference



TOKYO
INTERNATIONAL
PROJECTION MAPPING
AWARD

7 - Schedule and Delivery Format

July 31st (Monday) 3:00 PM
- Submission of Video Storyboard for Progress Check 1

A video storyboard is a blueprint created to understand the overall picture of the work, assuming that the storyboard is arranged according to the planned time.

- ☐ Aspect ratio: 16:9 (full size is not necessary) ☐ Codec: mp4
- ☐ Frame rate: 30fps (***please use 30fps instead of 29.97fps**)
- ☐ Audio: with sound (even temporary sound is acceptable)

September 25th (Monday) 3:00 PM
- Progress Check 2, Submission of Intermediate Video

Please submit what you have completed at this point in the same export format as the final delivery, and we will also check for any errors or issues.

- ☐ Size: Full-size (3840x2160) ☐ Frame rate: 30fps
- ☐ Codec: mp4 ☐ With audio ***Please provide stereo sound.**
- ☐ List of materials used ***We will send you the format to fill in from the secretariat.**

October 23rd (Monday) 3:00 PM
- Final data submission

Please submit the final version of the completed data. Please allow sufficient time for export and upload, and submit with plenty of time to spare.

- ☐ Size: Full size (3840x2160) ☐ Frame rate: 30fps
- ☐ Codec: mp4 ☐ With audio ☐ List of materials used (if updated)

Late October to early November
- Data confirmation period by the secretariat

If there are any deficiencies, there is a possibility that revision and re-export work may be required.

November 11th (Saturday)
- Screening event.

Screening event at Tokyo Big Sight!

Please follow the naming example below when submitting the data.

If you need to re-upload the revised data, please number them with v2, v3, etc. after the date to indicate the new ones.

Naming example: "TeamName_VideoConte_Date.mp4", "TeamName_CompletedData_Date_v2.mp4".



TOKYO
INTERNATIONAL
PROJECTION MAPPING
AWARD

8 - Dropbox/ Contact Information

Various materials related to production and movie data will be exchanged through the cloud-based file-sharing service "Dropbox".

1. At the time of entry:

After registering in the entry form, please upload the data from the link in the automatic reply email sent to you from the "PMAVol.8 submission window".

2. After document screening:

The secretariat will issue a link for each team until the deadline for each progress confirmation. Please upload the data from the link.

*You can upload without registering an account.

*There is no limit to the upload capacity for the desktop or mobile applications of Dropbox.

*The maximum file size that can be uploaded from Dropbox Web Browser is up to 50GB.

■ Notes ■

-As it is a highly secure online storage, depending on the size of the data and the network environment, it may take time for data transfer.

-Please avoid uploading at the last minute and submit with sufficient time.

*When uploading heavy data such as videos, please upload them one file at a time.

-Depending on the network condition, incomplete uploads may occur. Please make sure that the upload is completed properly.

-If multiple people log in at the same time with one account, there may be malfunctions such as the screen crashing. Please be careful.

-Please pay attention to the following points when naming folders and files. If the naming rules are not followed, it may cause malfunctions such as failure to upload.

File Naming Convention

Please refer to the following naming examples and name your file when submitting data. If you need to upload revised data again, please number them as v2, v3, etc. after the date to indicate the new version.

Example: "Team Name_Video Concept_Date.mp4", "Team Name_Final Data_Date_v2.mp4"

【List of special characters not allowed】

Backslash ¥ Slash / Double quotation mark "

Colon : Less than < Greater than > Pipeline | Asterisk *

Question mark ?



TOKYO
INTERNATIONAL
PROJECTION MAPPING
AWARD

8 - About using Dropbox

[At the time of entry]

Please compile all the submission documents into one ZIP folder and rename the folder as follows: "[Team Name]_Submission Documents_Date.ZIP". Then, please upload the data from the link in the automatic reply email sent after the entry form registration at the "PMAVol.8 Submission Document Submission Portal".

[After the document screening process]

Before the deadline for each progress check, the secretariat will issue an upload link for each team. Please be sure to follow the file naming rules and upload your data from the link provided.



8 -Regarding methods of communication

Regarding the method of communication with the participants, we have used Slack in previous years, but we have switched to email communication. Please make sure that you can receive emails from info@pma-office.jp.

For any questions, please check this manual or the frequently asked questions (<https://pmaward.jp/faq/>) on the website before contacting us.



9 - Notes / Cautions

Notes on Production

- The maximum length of the work should be 1 minute and 30 seconds.
- Please export the deliverable video in the specified codec and format, using P9 as a reference. If the deliverable video is provided in a different format, we may request a re-export, or the work may not be able to be screened.
- Using copyrighted music as BGM without permission is strictly prohibited. Please use original music with cleared copyrights or licensed royalty-free music. Similarly, if sound effects are used, we only allow the use of those whose copyrights are cleared. Please note that the secretariat cannot bear the cost of using copyrighted music. In some cases, we may request the right holder's signature on a permit issued by the secretariat for the use of original music.
- Expressions that infringe upon copyright or portrait rights are prohibited.
- Using logos and text such as the title of the work, the name of the school, team, individual, company, product or service in the video is prohibited.
- Expressions that make others feel uncomfortable, slander or defame others, have religious implications or other similar messages are prohibited. Graphic and violent images and descriptions are also prohibited.
- Using footage from TV programs or commercial DVDs without permission is prohibited.
- Using paintings, illustrations, photographs or other works created by others in the video without permission is prohibited.
- Using characters from products or merchandise without permission is prohibited.



9 - Notes / Cautions

Ownership of the work.	The rights to the video and music produced belong to the Tokyo International Projection Mapping Award Executive Committee, the organizer of the event, and usage rights are granted to cooperating companies such as Tokyo Big Sight Co., Ltd. In addition to projection mapping, they will be used for advertising by the above companies (such as websites, TV, digital signage, art collections, company overviews, etc.), without any restrictions on still images or videos. However, the use of the work as a production record for the participant's job search or artistic activities is allowed.
Information about the work.	During and after production, please ensure that information about the work (such as videos or still images) does not leak to anyone other than the team members. Even after the award has ended, please do not make the completed projection material data available to the public, as it may include information from the production chart. However, this does not apply if the material is to be used for private purposes such as job hunting. It is acceptable to post photos that do not reveal the specific content of the work, such as pictures of the meeting or the production process, on social media or websites as part of the production process.
Recording	You are allowed to take videos and photos of the projection mapping shown during the screening event and post them on social media if you wish. The award secretariat will also take a record video and record still photos, and the record video will be uploaded to the official YouTube channel of the award later. You are welcome to use the link to the video for your promotion or introduction of your works.
Materials provided by the secretariat	However, please note that the proposal format, production manual, production chart, and materials and documents provided by the secretariat may not be posted on social media or used for any other purpose without permission.
Posting on social media	To ensure fairness, posting or leaking of production materials (videos or still images) during the production process before the screening event is strictly prohibited. Posting comments that defame or slander the organizers, co-sponsors, collaborating companies, or other participating schools related to this award is prohibited. However, posting photos of production scenes is acceptable as long as the work is not directly identifiable.
Participation rules	Regarding the production schedule, please ensure that the submission deadlines are strictly followed. After the deadline for data submission has passed, replacement of the data for personal reasons will not be allowed. In case of unforeseen circumstances that prevent you from meeting the deadline or continuing participation, please promptly report to the award secretariat (in the case of students, consult with the responsible teacher or school staff first).



9 - Notes / Cautions

- About Video Production

Although we have held workshops in previous years to provide guidance on video production and formatting during post-production, we will not be holding them this year. Please read this manual carefully and handle video production and formatting accordingly.

- This year's screening will be for on-site general viewing only.

We will provide viewing areas for all teams that have entered, but there will be no pre-event gatherings, reception, event rehearsal, podium or commentary during the screening, or award ceremony, as in previous years. You can watch the screening in the conference plaza like any other general attendee.

- This year's screening will only be held as a real-time event, and online streaming is not currently planned.

If it is difficult for you to attend the event in person, we apologize but please confirm the recorded video instead.

- Each team's transportation and lodging to the venue will be the responsibility of the team members themselves.

In previous years, we have provided assistance with transportation and lodging for teams entering from afar during the screening. However, due to a change in management policy, we regret to inform you that each team will be responsible for their own transportation and lodging. Please be aware of this beforehand.

- About judging/awards

In previous years, multiple judges have evaluated the entries on-site during the screening event to determine the winning teams. However, this year, judges will be conducting the evaluation in advance at the venue, and the award winners will be announced during the screening event on the day of the event. We will also post the results on the official website after the event. The administration office will contact team representatives after the event to deliver the prize money, certificate, and trophy.



9 - Notes / Cautions

Frequently Asked Questions

Q: I want to change the members of my team.

A: Please inform the secretariat about the change in members. If you want to add members, please submit a signed affidavit from the person concerned to the secretariat.

Q: I couldn't upload my data and missed the deadline.

A: Depending on the size of the data and network environment, data transfer may take time. When submitting, please try to avoid uploading at the last minute and give yourself enough time for rendering and submission.

Q: Can I take a recording of the projection mapping video at the screening event?

A: It is possible for individuals to shoot videos and still images of the projection mapping video screened on the day of the judging. You may also post them on social media.

Q: I don't know if the music I want to use is royalty-free.

A: Please refer to the Japanese Society for Rights of Authors, Composers and Publishers (JASRAC) (<http://www.jasrac.or.jp/>) for information on music copyrights. Alternatively, please contact the company or site where you plan to distribute it.

Q: Can I use live-action video in my work?

A: Yes. There are no restrictions on the type of video technology used.



9 - Notes / Cautions

Frequently asked questions are also posted on the official website.

For any other inquiries, please refer to this manual or the official website, and if you have any questions, please contact the secretariat.

* Inquiries: info@pma-office.jp

Official website: <https://pmaward.jp/>

FAQs: https://pmaward.jp/entry/entry_qa/

We also update information about the award on various social media platforms. Please follow us!

 <https://www.facebook.com/pmaward.jp/>

 https://twitter.com/pmaward_jp

 <https://www.instagram.com/pmaward.jp/>

 <https://www.youtube.com/channel/UCkm4oV8cOMOMgNCgiLk7eSw>

 <https://note.com/pmaward/>

